



**Room5Friends** Goodnight all. Look forward to chatting more next week!  
**#Spedchat** -9:58 PM Jan 8th, 2013



**Room5Friends** **@teachwtechbrox** healthy thoughts to your daughter!  
**#Spedchat** -9:54 PM Jan 8th, 2013



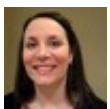
**kristalfloyd1** Great chatting with you on **#spedchat**. Look forward to next week and join us on **#SPedPLC** on Sunday at 8pm CST. -9:53 PM Jan 8th, 2013



**BarbaraSchelle** **@teachwtechbrox** Nice chatting w/ you! Thanks, and hope everyone recovers from the flu! **#spedchat** -9:52 PM Jan 8th, 2013



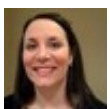
**teachwtechbrox** Thanks for stopping and sharing, we have a join chat coming up in a couple weeks, stay tunes for details!! **#spedchat** -9:52 PM Jan 8th, 2013



**Room5Friends** **@teachwtechbrox** Does it allow for any multi-sensory instruction? **#Spedchat** -9:52 PM Jan 8th, 2013



**teachwtechbrox** I have to pop out a little early, DD w/ the flu is calling ~ keep chatting, I'll archive after 10:30 **#spedchat** -9:51 PM Jan 8th, 2013



**Room5Friends** LOVE leveled readers of the same topics... **#Spedchat** -9:51 PM Jan 8th, 2013



**Room5Friends** Ahhh. Fixed. **#Spedchat** -9:50 PM Jan 8th, 2013



**teachwtechbrox** Our new program is built around teaching at instructional level,so modifying is little different b/c it is already below grade lvl **#spedchat**  
-9:49 PM Jan 8th, 2013



**Room5Friends** Oh no. My tweet chat just froze... [#Spedchat](#) -9:48 PM Jan 8th, 2013



**kristalfloyd1 @teachwtechbrox** It's such a hard balance....and I completely understand the struggle. You will get them caught up!! [#spedchat](#) -9:47 PM Jan 8th, 2013



**BarbaraSchelle @Room5Friends** They are able to be flexible and supplement when necessary [#spedchat](#) -9:47 PM Jan 8th, 2013



**teachwtechbrox @theipodteacher** welcome! [#spedchat](#) -9:47 PM Jan 8th, 2013



**teachwtechbrox @Room5Friends** modified Treasures material few yrs ago, now we r structured little differently so not modifying (officially) this yr [#spedchat](#) -9:47 PM Jan 8th, 2013



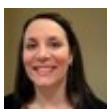
**BarbaraSchelle @Room5Friends** Our Resource and Self-Contained LLD teachers modify reg ed program with great success-- [#spedchat](#) -9:46 PM Jan 8th, 2013



**teachwtechbrox** would have loved to set up a tent, made s'mores, but program is too structured :-( however, kids are reading!!! which is exciting [#spedchat](#) -9:45 PM Jan 8th, 2013



**theipodteacher #Spedchat** Hi all. Peeking in tonight. Sorry I'm late. -9:44 PM Jan 8th, 2013



**Room5Friends** Anyone modifying reg Ed program? I must have a modified "end of selection test" for every harcourt story! [#Spedchat](#) -9:44 PM Jan 8th, 2013



**teachwtechbrox @kristalfloyd1** agreed! I miss being able to extend some lessons, had a book about camping...out of 7 Sts only 1 had prior knowledge [#spedchat](#) -9:44 PM Jan 8th, 2013



**Room5Friends @kristalfloyd1** Agree. If I get a student who could use that script, I would use it, even if I hate it. It depends on Learners. **#Spedchat** -9:43 PM

Jan 8th, 2013



**BarbaraSchelle @teachwtechbrox** You're welcome--good to know. No extended standards in NJ. **#spedchat** -9:42 PM Jan 8th, 2013



**kristalfloyd1 @Robitaille2011** Students have different learning needs. We need to do what we can to meet the learners needs. **#spedchat** -9:42 PM Jan 8th, 2013



**BarbaraSchelle @Robitaille2011** Agreed--have a great night! **#spedchat** -9:41

PM Jan 8th, 2013



**kristalfloyd1 @Room5Friends** As teachers we like to use creativity. At the same time if researched practices work our struggling learners need it. **#spedchat** -9:41 PM Jan 8th, 2013



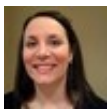
**Room5Friends @Robitaille2011** Thanks for joining us. Glad to follow u now and learn together! :) **#Spedchat** -9:40 PM Jan 8th, 2013



**teachwtechbrox @Robitaille2011** AGREED, thanks!! **#spedchat** -9:40 PM Jan 8th, 2013



**teachwtechbrox @BarbaraSchelle** ok, thanks! Ohio has published extended standards and I know a couple of the states have too, was just curious **#spedchat** -9:40 PM Jan 8th, 2013



**Room5Friends @teachwtechbrox** EXACTLY. **#Spedchat** -9:40 PM Jan 8th, 2013



**Robitaille2011 #spedchat** Great discussion...but I've got to go...there should always be flexibility in teaching....scripted does not work for everyone... -9:40 PM

Jan 8th, 2013



**teachwtechbrox @Room5Friends** "manual on the arm" is how I taught the first half of this year with our new reading program, felt like a 1st yr Tr **#spedchat**

-9:39 PM Jan 8th, 2013



**BarbaraSchelle @teachwtechbrox** no extended standards....same for all-- goals for remediating deficits--what student needs to access curriculum **#spedchat**

-9:39 PM Jan 8th, 2013



**Room5Friends** Anyone have other thoughts on these? **#Spedchat**

-9:39 PM Jan 8th, 2013



**Room5Friends @teachwtechbrox** But YES, I do believe in a "common language" in the classroom. **#Spedchat**

-9:38 PM Jan 8th, 2013



**theipodteacher** RT **@Room5Friends**: I hate scripted programs! **#Spedchat**

-9:38 PM Jan 8th, 2013



**teachwtechbrox** with, but I think the consistency of the language helps with developing the language skills **#spedchat**

-9:37 PM Jan 8th, 2013



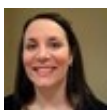
**Room5Friends** So, the research basis may be good, but I just feel inauthentic using a "script." **#Spedchat**

-9:37 PM Jan 8th, 2013



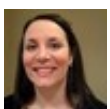
**teachwtechbrox** for kids with language challenges, I have seen some nice success with scripted programs; they are little odd at first to teach... **#spedchat**

-9:37 PM Jan 8th, 2013



**Room5Friends** ..who walks around with the manual in her/his arm has no idea what they are doing. **#Spedchat**

-9:36 PM Jan 8th, 2013



**Room5Friends @kristalfloyd1** well, I feel like scripted programs are a bit silly. I told my student teacher a few years ago that, any teacher.. **#Spedchat**

-9:36 PM Jan 8th, 2013



**kristalfloyd1 @deannaclemens** Chatting about curriculums on **#spedchat**...you should join. -9:36 PM Jan 8th, 2013



**kristalfloyd1 @Room5Friends** What do you not like about scripted programs? **#spedchat** -9:34 PM Jan 8th, 2013



**Room5Friends** ...grader will struggle on in 3rd grade. **#Spedchat** -9:34 PM Jan 8th, 2013



**teachwtechbrox @BarbaraSchelle** does NJ have extended standards for students with disabilities?? just curious..sorry off topic **#spedchat** -9:34 PM Jan 8th, 2013



**Room5Friends @BarbaraSchelle** But it has to be a deficit that student has already shown. I can't predict, in the IEP, what my 3rd ... **#Spedchat** -9:34 PM Jan 8th, 2013



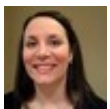
**teachwtechbrox @Room5Friends** would love your opinion on program we are using now, nice pedagogy embedded, but somewhat scripted & VERY structured **#spedchat** -9:33 PM Jan 8th, 2013



**BarbaraSchelle @Room5Friends @zenirj** We are no longer using standards from previous grade levels--we must use current gr standard or customize **#spedchat** -9:32 PM Jan 8th, 2013



**Room5Friends @Robitaille2011** No problem. I try to go back and forth. :) **#Spedchat** -9:32 PM Jan 8th, 2013



**Room5Friends** I hate scripted programs! **#Spedchat** -9:31 PM Jan 8th, 2013



**Room5Friends @BarbaraSchelle** yes, we have the option to use Wilson, depending on student. We also have option of Stevenson, depending on stdnt **#Spedchat** -9:31 PM Jan 8th, 2013



**Robitaille2011** **@Room5Friends** Oops...thanks for the reminder **#spedchat**

-9:30 PM Jan 8th, 2013



**Room5Friends** **@zenirj** Should be a standard from a previous grade level OR steps that have already been taught to get to standard, deficit. **#Spedchat**

-9:29 PM Jan 8th, 2013



**teachwtechbrox** **@zenirj** IEPs also need to reflect the needs that were stated in last ETR - goals need to reflect needs if not mastered yet **#spedchat**

-9:29 PM Jan 8th, 2013



**Room5Friends** Hey everyone, don't forget to put the hash tag in your tweets. If u are in tweet chat, you may not see other comments. **#Spedchat**

-9:28 PM Jan 8th, 2013



**zenirj** **#spedchat** Proponents of said difference was measurable steps on way to standard.

-9:28 PM Jan 8th, 2013



**teachwtechbrox** **@Room5Friends** not a fan of the scripted programs??

**#spedchat** -9:27 PM Jan 8th, 2013



**zenirj** **#spedchat**: disc was if goal is standard how is that individual plan.

Whole country does it. -9:27 PM Jan 8th, 2013



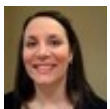
**kristalfloyd1** **@zenirj** I'm not sure if it is different by state, but our IEP goals must address the critical needs of the students learning. **#spedchat**

-9:27 PM Jan 8th, 2013



**BarbaraSchelle** **@Room5Friends** Do you have Wilson prog at your school? Ours is run as Resource Center--looking to change this--could be better **#spedchat**

-9:27 PM Jan 8th, 2013



**Room5Friends** **@Robitaille2011** oh, that's better then. **#spedchat**

-9:27 PM Jan 8th, 2013



**teachwtechbrox** Here are a couple resources I found this past week as I was searching for reading resources: <http://t.co/oYgonOsy> **#spedchat** -9:26 PM Jan 8th, 2013



**teachwtechbrox** Here are a couple resources I found this past week as I was searching for reading resources: <http://t.co/9VWoid74> **#spedchat** -9:26 PM Jan 8th, 2013



**kristalfloyd1 @Robitaille2011** Is it explicit instruction like the student in sped need? **#spedchat** -9:24 PM Jan 8th, 2013



**BarbaraSchelle @Room5Friends** agreed **#spedchat** -9:24 PM Jan 8th, 2013



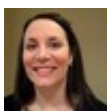
**Room5Friends** ...then likely yes, he/she should have a standards based IEP. Based on previous grades, content that has been taught, not mastered **#Spedchat** -9:24 PM Jan 8th, 2013



**teachwtechbrox @zenirj** I would think that you would want IEP goals to mirror what Sts is going to be assessed on & what is grade level **#spedchat** -9:24 PM Jan 8th, 2013



**BarbaraSchelle @zenirj** In our district we are customizing goals--based on what student needs to access curriculum **#spedchat** -9:23 PM Jan 8th, 2013



**Room5Friends @zenirj** Hey Joe. Depends on the kid's needs. IEP goals should be based on needs. And if its a kiddo in inclusion... **#Spedchat** -9:23 PM Jan 8th, 2013



**Room5Friends @Robitaille2011** do you feel frustrated that its all scripted? This is what I found frustrating about Stevenson and Wilson. **#Spedchat** -9:22 PM Jan 8th, 2013



**zenirj #Spedchat**: question camp up in mtg. Inclusion kid. Should IEP goals be a CC standard? Based on? Totally separate from? -9:21 PM Jan 8th, 2013



**Room5Friends @Robitaille2011** Is it really the "miracle" they make it sound like? [#Spedchat](#) -9:19 PM Jan 8th, 2013



**BarbaraSchelle @teachwtechbrox** Seems to be working well...our 3rd year using the program [#spedchat](#) -9:19 PM Jan 8th, 2013



**teachwtechbrox** I was considering adding something like Daily 5, but right now struggling with fitting in everything when some kids are 1/2 day [#spedchat](#) -9:19 PM Jan 8th, 2013



**Robitaille2011 #spedchat** LLI is a 30 minute lesson and we've had great success! -9:19 PM Jan 8th, 2013



**Room5Friends** Our school has LLI in "reading intervention" [#Spedchat](#) -9:19 PM Jan 8th, 2013



**Robitaille2011 #spedchat** The"LLI" matches classroom practice- Shared, Guided, Independent...Reading -9:18 PM Jan 8th, 2013



**teachwtechbrox @Robitaille2011** I have heard teacher say good things about Fountas and Pinnell series [#spedchat](#) -9:17 PM Jan 8th, 2013



**BarbaraSchelle @Robitaille2011** We also use this [#spedchat](#) -9:17 PM Jan 8th, 2013



**Room5Friends** Our school is trying to move to Daily Five also but I'm questioning how it will work with the TEACCH methodology. [#Spedchat](#) -9:17 PM Jan 8th, 2013



**BarbaraSchelle @teachwtechbrox** We have 100 min LA block [#spedchat](#) -9:17 PM Jan 8th, 2013





**teachwtechbrox** some of my students are doing Reading Mastery or Language for Learning, & still others are getting teacher made reading materials  
#spedchat -9:17 PM Jan 8th, 2013



**BarbaraSchelle @teachwtechbrox** We use guided reading model, leveled readers plus anthology in gen ed, RC and self-contained. School is gr 2-4  
#spedchat -9:16 PM Jan 8th, 2013



**Robitaille2011 #spedchat** we are using the "Levelled Literacy Intervention" system by Fountas and Pinnell. -9:15 PM Jan 8th, 2013



**kristalfloyd1** We use Read Well at our K-4 level #Spedchat @teachwtechbrox  
-9:15 PM Jan 8th, 2013



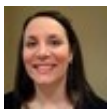
**teachwtechbrox** My district is doing Success For All reading program, very structured 90 solid min of instruction - some students are part of that  
#spedchat -9:15 PM Jan 8th, 2013



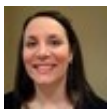
**PresenceLearn #SLPeeps & #SLP2B**, what are your thoughts on "online occupational therapy?" #SPEDchat #SPED -9:15 PM Jan 8th, 2013



**thadhaines** RT @teachwtechbrox: BTW, I will archiving tonights chat at <https://t.co/IBhGnv8j> ~ I'll tweet link again once it's posted #spedchat -9:15 PM Jan 8th, 2013



**Room5Friends** Whatever multi-sensory I can pull to cover standards and IEP objectives. #Spedchat -9:15 PM Jan 8th, 2013



**Room5Friends** I use the harcourt intervention series mixed with reading a-z mixed with the Phonics Dance and... #Spedchat -9:14 PM Jan 8th, 2013



**teachwtechbrox** BTW, I will archiving tonights chat at <https://t.co/IBhGnv8j> ~ I'll tweet link again once it's posted #spedchat -9:13 PM Jan 8th, 2013



**Room5Friends** Our reg Ed uses harcourt trophies to cover standards but use their own assessments maps in each grade level... But... **#Spedchat** -9:13 PM Jan 8th, 2013



**kristalfloyd1** RT **@teachwtechbrox**: tonight we were going to chat about reading curriculum and resources **#spedchat** -9:13 PM Jan 8th, 2013



**teachwtechbrox** do you have a school wide program? do you modify what you have or do you a have a separate program? **#spedchat** -9:12 PM Jan 8th, 2013



**teachwtechbrox** what does the reading curriculum look like at your school? **#spedchat** -9:11 PM Jan 8th, 2013



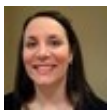
**teachwtechbrox** tonight we were going to chat about reading curriculum and resources **#spedchat** -9:11 PM Jan 8th, 2013



**BarbaraSchelle** **@teachwtechbrox** Thanks! Glad to be here! **#spedchat** -9:11 PM Jan 8th, 2013



**teachwtechbrox** **@BarbaraSchelle** hi, glad you stopped by **#spedchat** -9:10 PM Jan 8th, 2013



**Room5Friends** Oh good! More people! **#Spedchat** -9:10 PM Jan 8th, 2013



**teachwtechbrox** **@Robitaille2011** hi, welcome!! **#spedchat** -9:10 PM Jan 8th, 2013



**jconradslp** Jessica, SLP from Indiana Hello! **#spedchat** -9:10 PM Jan 8th, 2013



**BarbaraSchelle** Greetings--Barb from NJ--Learning Consultant--new to the chat-- [#spedchat](#) -9:10 PM Jan 8th, 2013



**Room5Friends** Is it just me and you Mel? [#Spedchat](#) -9:09 PM Jan 8th, 2013



**Robitaille2011** [@teachwtechbrox](#) [#spedchat](#) Hi, from Ontario Canada! -9:09 PM Jan 8th, 2013



**Room5Friends** Hi. Morgan from north east Ohio. [#Spedchat](#) -9:09 PM Jan 8th, 2013



**teachwtechbrox** I am "mommy nurse" (DD has flu) tonight so I will have to leave chat early, sorry...but hopefully you will keep the chat moving [#spedchat](#) -9:09 PM Jan 8th, 2013



**teachwtechbrox** Welcome to [#spedchat](#)! Take a second and introduce yourself - I'm Melanie from Ohio, intervention specialist obsessed w/tech :-)  
[#spedchat](#) -9:06 PM Jan 8th, 2013



**teachwtechbrox** First time chatting with us?? check out TweetChat, easiest way to follow [#spedchat](#) at: <http://t.co/cyGtK6p1> [#spedchat](#) -9:03 PM Jan 8th, 2013



**teachwtechbrox** it is 9:00 and time for [#spedchat](#) - for the next hour or so my tweets will be devoted to discussion reading curriculum in spec ed [#spedchat](#) -9:03 PM Jan 8th, 2013



**teachwtechbrox** [#spedchat](#) begins in about an hour @ 9 EST: discuss reading curriculum: what are you using, what is working/what isn't, hope to see you then! -8:13 PM Jan 8th, 2013



**MPNEngaged** Helping Struggling Students Get Organized | MiddleWeb | [#edchat](#) [#spedchat](#) [#schoolpsych](#) [@scoopit](#) <http://t.co/zCjdw9pC> -7:04 PM Jan 8th, 2013



**teachwtechbrox** Join us tonight 4 [#spedchat](#) 1/8 @ 9 EST: discuss reading curriculum: what strategies are working, websites, programs [#OhioEd](#) [#SLPeeps](#) [#maet](#) -7:04 PM Jan 8th, 2013



**think\_inclusive** Just Smile - A Simple Way to Build Inclusive Communities - [#TeamInclusion](#) [#spedchat](#) <http://t.co/gfgHg4p8> [#classrooms](#) -6:58 PM Jan 8th, 2013



**teachwtechbrox** Couldn't agree more, esp w/special edu! RT [@TeacherCast](#): Education needs more consultants by [@DanCallahan](#) <http://t.co/MrjdXxA0> [#spedchat](#) -6:46 PM Jan 8th, 2013



**easyreadsystem** A day in the life of an [#ASD](#) (autism) teacher...<http://t.co/sfBI89HF> [#SEN](#) [#edchat](#) [#spedchat](#) -6:40 PM Jan 8th, 2013



**mrmiketv** If you haven't already, make sure you check out today's craft and modification! <http://t.co/IZNVYo4j> [#aspie](#) [#preschool](#) [#spedchat](#) [#art](#) -6:30 PM Jan 8th, 2013



**LD.org** How can parents advocate to support their child's giftedness? This one is to watch and share. <http://t.co/99C5Wyo4> [#parents](#) [#spedchat](#) -6:24 PM Jan 8th, 2013



**mr\_scott5** Utah program uses [#computer](#) design to engage students with [#autism](#) <http://t.co/rsTaCoaO> [#sped](#) [#techchat](#) [#spedchat](#) -5:19 PM Jan 8th, 2013



**mr\_scott5** Soccer-simulation [#game](#) gets accessibility award <http://t.co/4XZiAvRM> [#sped](#) [#spedchat](#) [#gaming](#) [#fifa](#) -5:18 PM Jan 8th, 2013



**mr\_scott5** Ind. district continues to address compliance issues <http://t.co/LcKX4muk> [#sped](#) [#spednews](#) [#spedchat](#) -5:16 PM Jan 8th, 2013



**PresenceLearn** Want to learn more about the shift in [#SpecialEducation](#) and the [#CommonCore](#)? Watch a free webinar. <http://t.co/MMqPwYhH> [#SPEDchat](#) [#SLP](#) -5:10 PM Jan 8th, 2013



**AspieTribe** RT **@mrmiketv** <http://t.co/9Dw5QDjo> **#aspie #ADHD #spedchat**  
<http://t.co/Opp1aZon> -5:04 PM Jan 8th, 2013



**mrmiketv** An easy craft modification for a **#child** who doesn't like touching goop :) <http://t.co/q6DZ2Scq> **#aspie #ADHD #spedchat** -5:00 PM Jan 8th, 2013



**mrmiketv** RT**@PresenceLearn**: Great post about therapists and **#autism!!**  
<http://t.co/OPfYSxSd> **#spedchat #SpecialEducation #Specialneeds #earlyed**  
 -4:46 PM Jan 8th, 2013



**Special Ed USF** Military to cover ABA therapy for children with autism for 1 year <http://t.co/gZLCXRBq> **#autism #spedchat #specialeducation #sped** -4:16 PM Jan 8th, 2013



**ollibean** From **@think\_inclusive** 3 things that need 2 happen **#Acceptance**  
 Access HighExpectations **#inclusion #spedchat #disability**  
<http://t.co/Ogi3NhSX> -3:55 PM Jan 8th, 2013



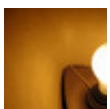
**LDorg** Do you have questions about how to choose the right preschool for your child? Get answers here: <http://t.co/z0wTogDD> **#parents #spedchat** -3:36 PM Jan 8th, 2013



**LDorg** A list of techniques that will help your child build self-esteem. A must read! <http://t.co/OYcrOI6h> **#spedchat #parents** -3:26 PM Jan 8th, 2013



**crissaracer** In a high tech world-- What are your thoughts?  
<http://t.co/rq52BEAm> **#spedchat #handwriting #writing #essdack** -3:02 PM Jan 8th, 2013



**think\_inclusive** Striving for **#Community** as a God-Loving Aspie -  
**#TeamInclusion #spedchat** <http://t.co/cLSFuXSk> **#acceptance** -2:58 PM Jan 8th, 2013



**atomic\_learning** RT **@pacercenter**: "Partners" is an PACERCenter pub that connects everyone. Read the latest edition. <http://t.co/bVnsXgta> **#spedchat**  
 -2:48 PM Jan 8th, 2013



**preemie\_mommy** Yet another useful learning tool:<http://t.co/q0SgIMrj> via [@limbert65](https://twitter.com/limbert65) at [#newellfonda](https://twitter.com/newellfonda) [#iowacore](https://twitter.com/iowacore) [#spedchat](https://twitter.com/spedchat) [#edhcat](https://twitter.com/edhcat) [#edtech](https://twitter.com/edtech) -2:13 PM

Jan 8th, 2013



**internet4classr** [#iPad](https://twitter.com/iPad) cheat sheet - Basics for using iPad - <http://t.co/XOfq9Wuz> [#edtech](https://twitter.com/edtech) [#apple](https://twitter.com/apple) [#edchat](https://twitter.com/edchat) [#elemchat](https://twitter.com/elemchat) [#spedchat](https://twitter.com/spedchat) [#ece](https://twitter.com/ece) [#ptchat](https://twitter.com/ptchat) [#kinderchat](https://twitter.com/kinderchat) -1:10 PM Jan 8th, 2013



**Inclusive Class** The Executive Function and School Performance (executive-function-model) via <http://t.co/ievNWMcR> [@nclid](https://twitter.com/nclid) [#spedchat](https://twitter.com/spedchat) [#PTchat](https://twitter.com/PTchat) [#ld](https://twitter.com/ld) [#adhd](https://twitter.com/adhd) -12:52 PM Jan 8th, 2013